

Guangwei Cold-Chain Equipment Handbook

REFRIGERATION
SYSTEM
INTEGRATION
SERVICE
PROVIDER

LEADING GREEN
REFRIGERATION
TO BUILD ENERGY-
SAVING ECOLOG

CAREFULLY
DESIGNED WELL—
MADE
SINCERE SERVICE
EXCELLENCE

SAFETY AND
ENVIRONMENTAL
PROTECTION, PAY
ATTENTION TO LIFE
CARE FOR HEALTH



Yantai Guangwei Food Cold-Chain Technology Co., Ltd.



Yantai Guangwei Food Cold Chain Technology Co., Ltd. is a comprehensive supplier of machinery and equipment with many years of experience in food processing and cold chain technology design, manufacturing and sales, aiming to provide customers with a full range of reliable services. The business scope includes meat food processing equipment, seafood and food conditioners, cold storage renovation design, modernization, cold chain logistics refrigeration system engineering design, protection and energy saving, etc.

We have been adhering to the cooperation concept of "Unity and Cooperation, Mutual Benefit and Win-Win", and maintain good cooperative relations with many well-known domestic machinery and equipment suppliers. In addition, together with Yantai Aowei Refrigeration Equipment Co., Ltd. and Yantai Aowei Refrigeration Engineering Co., Ltd., subsidiaries of the same group, we provide our customers with the highest quality product design, machine manufacturing and installation, and a full range of after-sales services. And in Vietnam, India, Malaysia, Peru, Indonesia, Argentina, Chile and other countries around the world, there are offices and after-sales service stations to provide convenient after-sales service for global customers.

In the future, Yantai Guangwei Food Cold Chain Technology Co., Ltd. will continue to promote the two major brands of "AOWID" and "UFEC", and work together to create a better future.

CATALOG

1. Quick Frozen IQF Products Series

Carton Box Cooling Tunnel Quick Freezer.....	07
Spiral IQF Individual Quick Freezer.....	08
Spiral Cooling Tower.....	09
Net Belt Tunnel IQF Individual Quick Freezer.....	11
Plate Belt IQF Tunnel Individual Quick Freezer.....	12
Fluidized Tunnel Quick Freezer.....	13
Brine Water IQF Individual Quick Freezer.....	14
Horizontal Plate Quick-Freezer.....	15
Vertical Plate Quick Freezer.....	16

2. Compressor Unit Series

Semi-Hermetic Screw Refrigeration Compressor Unit C Series.....	18
Semi-Hermetic Screw Refrigeration Compressor Unit F Series.....	19
Semi-Hermetic Screw Refrigeration Compressor Unit A Series.....	20
Open Type Single-stage Screw Refrigeration Compressor Unit.....	21
Open Type Compound Double-Stage Screw Refrigeration Compressor Unit.....	22
Open Type Skid Double-Stage Screw Refrigeration Compressor Unit.....	23
NH ₃ /CO ₂ Cascade Unit.....	24
NH ₃ /CO ₂ Secondary Refrigerant Unit.....	25
Screw Parallel Compressor Unit.....	26
Semi-Hermetic Piston Compressor Unit.....	27

CATALOG

3. Evaporator And Condenser Series

Ceiling Type Air Cooler (Copper/Aluminum Tube Aluminum Fin).....	29
Floor Type Air Cooler (Stainless Steel Tube Aluminum Fin).....	31
Evaporation Condenser.....	33
Air Cooled Condenser.....	35
Air Cooled Condensing Unit.....	37
Open Type Water Cooling Tower.....	38
Closed Type Water Cooling Tower.....	39
Titanium Shell And Tube HeatExchanger	40
Plate Type Heat Exchanger.....	41
Brazed Plate Heat Exchanger.....	42
Evaporator Coil.....	43

4.

Cold Chain Logistics Series And Racking System

Cold Room Door.....	45
Logistics Docking System.....	47
Cold Room Door Accessories.....	48
Racking System.....	49

5.

Cold Storage Series

Prefad Cold Store.....	56
Prefad Cold Store (Monoblock Unit)	57
Ripening Chamber.....	58
Containered Cold Storage.....	59
Compressor Condensing Unit.....	60

CATALOG

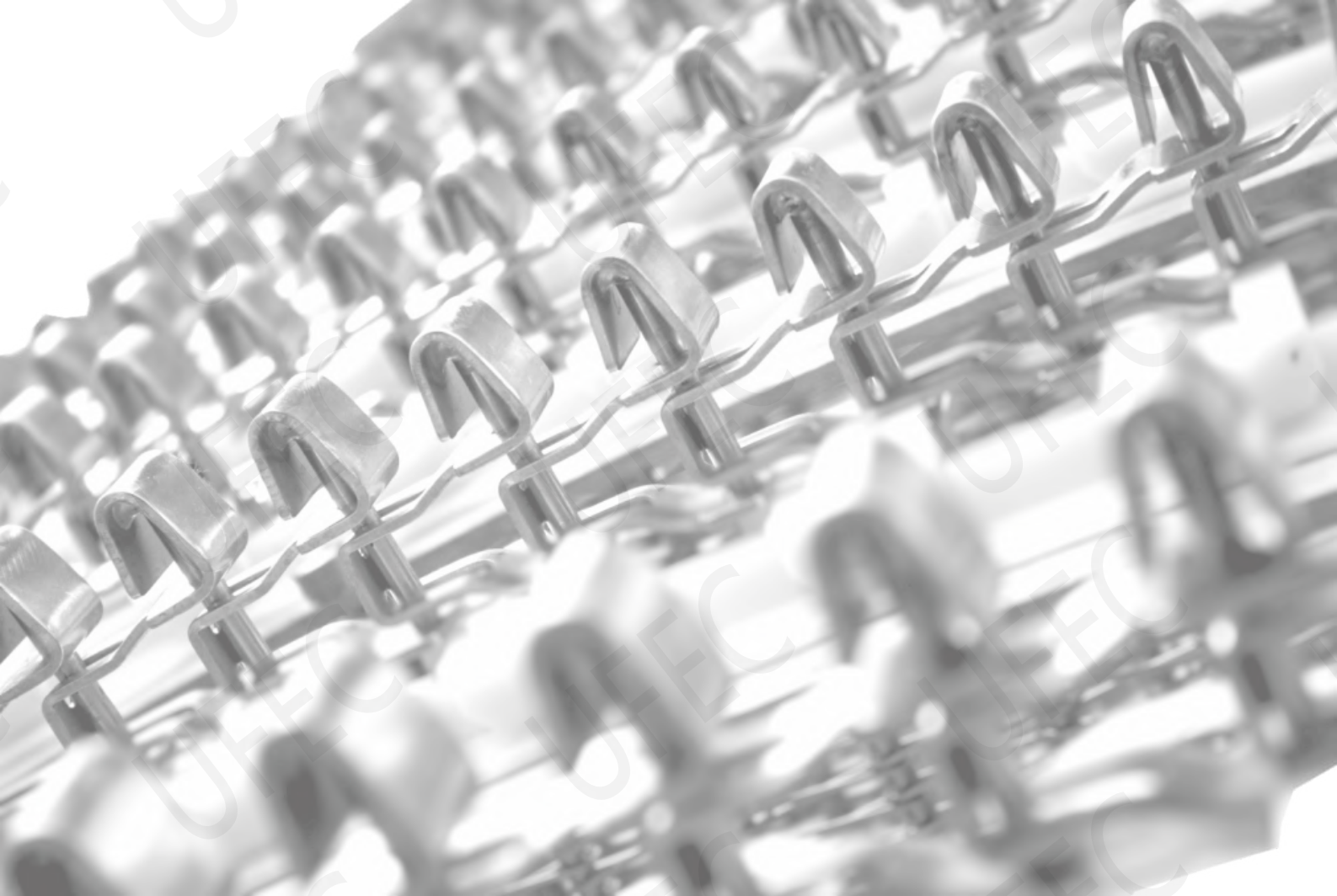
6. Ice Machine Series

Flake Ice Machine.....	62
Tube Ice Machine.....	63
Direct Refrigeration Block Ice Machine.....	64
Brine Block Ice Machine.....	65

7. Other Refrigeration Equipment And Accessories

Industrial Water Chiller Package Unit	67
Industrial Water Treatment Equipment.....	68
Fish Tray	69
Other Accessories.....	70

Keep Improving, Making Better Life

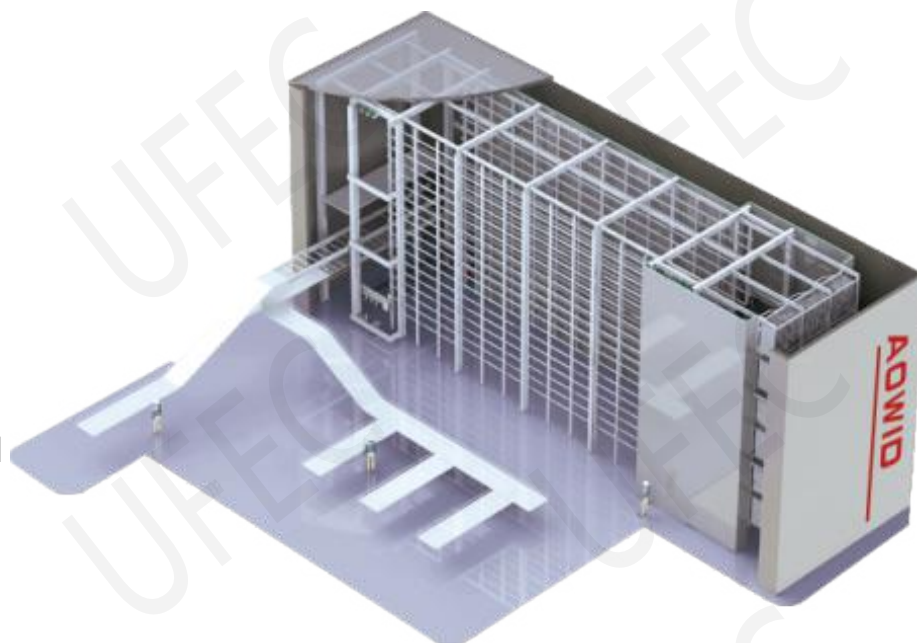


Quick Freezing IQF Products Series

Carton Box Cooling Tunnel Quick Freezer

Introduction

The carton box cooling tunnel quick freezer is a new type of automatic quick-freezing equipment designed based on many years' experience. This equipment is mainly used in big capacity frozen meat, poultry processing, food and beverage (fast food), the main service is in the whole product line of frozen warehousing logistics, and its efficient performance has been recognized.

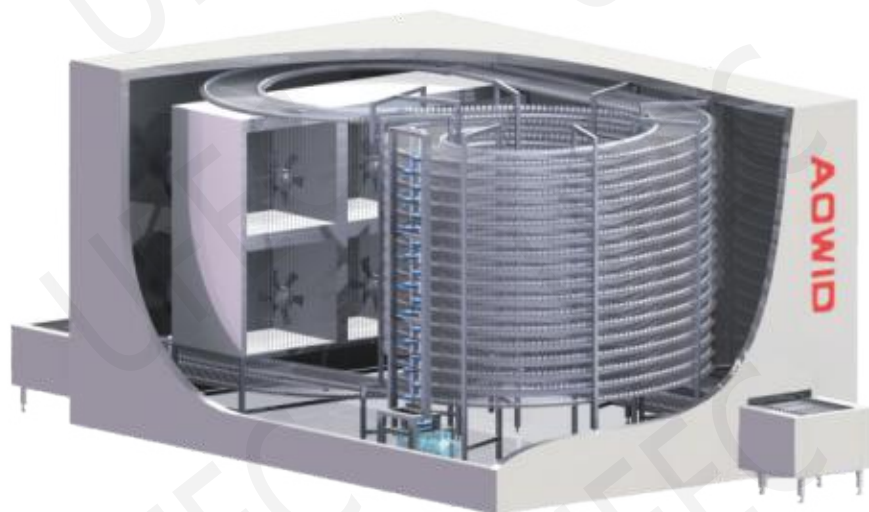


Carton Box Cooling Tunnel Quick Freezer Performance And Parameters

Refrigerant	Cargo-through height (mm)	Pallet size L*W*H(m)	Capacity of each plate (kg)	Liquid in and vapor back (φ)	working condition
R744	245	505*385*100	10	38mm*57mm	-42°C

Model	ZNLD-8- I	ZNLD-8- II	ZNLD-10- I	ZNLD-10- II	ZNLD-12- I	ZNLD-12- II
Input /Output speed (T/H)	8	8	10	10	12	12
Dimensions L*W*H (m)	32.8*8.5*7.5	32.8*8.5*7.2	35*8.5*8.2	34.3*8.5*7.5	38*8.5*8.4	32.8*8.5*7.9
Inventory (T)	83.16	64.8	103.68	86.94	121.5	108
Freezing time (H)	15	8	15	8	15	8
Cold consumption (kW)	695	890	818	1080	945	1250
Installed power(kW)	154	154	154	174	174	174
Number of evaporators	20	20	20	24	24	24

Spiral IQF Individual Quick Freezer



Introduction

Spiral IQF individual quick freezer don't have cage and tensioning device, completely solve the problem of Derailment, extended belt lifetime, lower installed power, while achieving single spiral IQF low inlet and low outlet, and it can be made into a variety of rotating track geometry as needed. The device is widely used in aquatic products, meat category, fruits and vegetables, prepared foods category, and pre-cooling, freezing, baking process.

Gear Transmission



Stainless Steel Mesh Belt



Plastic Mesh Belt



Single Spiral IQF Individual Quick Freezer Performance And Parameters

Model	Dimensions L*W*H (mm)	Number of layers	Effective width of mesh belt(mm)	Required cooling capacity(kW)	Installed power(kW)
SDSF500- I	7200*5300*3100	10	550	90	18.8
SDSF750- I	7700*5600*3650	12	600	140	24.4
SDSF1000- I	7700*5600*4150	16	600	170	25.4

Double Spiral IQF Individual Quick Freezer Performance And Parameters

Model	Dimensions L*W*H (mm)	Number of layers	Effective width of mesh belt(mm)	Required cooling capacity(kW)	Installed power(kW)
SDSF1000- II	12500*5300*3100	2*10	550	170	30.4
SDSF1500- II	13100*5600*3600	2*12	600	240	48
SDSF2000- II	13100*5600*3900	2*16	600	320	49.8
SDSF3000- II	13700*6000*4500	2*20	650	430	53.8

Other Performance And Parameters

Input and output temperature	Freeze temperature	Cargo-through height	Operating working conditions
+50 °C~ -18 °C	-35 °C	≥ 100 mm	+35 °C / -42 °C~ -45 °C

Spiral Cooling Tower

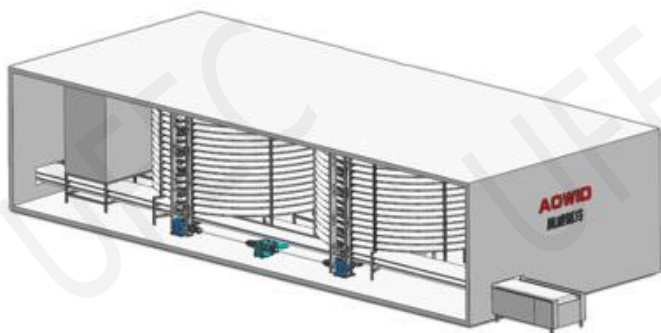


Introduction

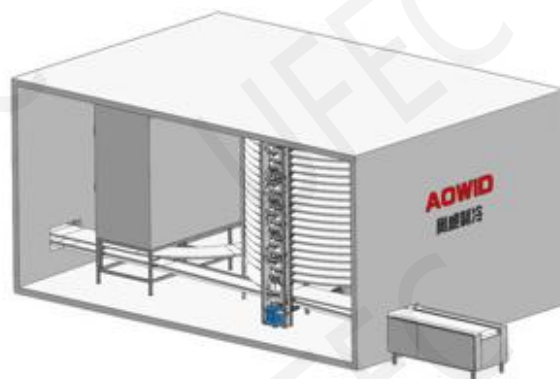
Spiral cooling tower can cool all kinds of baked foods and fried foods. Natural cooling or forced cooling can be used. The spiral proofing can be connected to the production line for the user's bread and other food production to greatly improve the production efficiency. Through the monitoring system, the entire proofing process can realize unmanned production. The spiral cooling tower has an automatic cleaning system, which can automatically complete the cleaning of the entire mesh belt and automatically dry it within 1-2 hours.



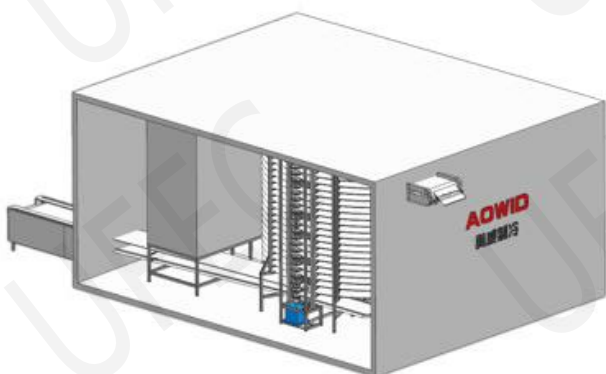
Spiral Cooling Tower



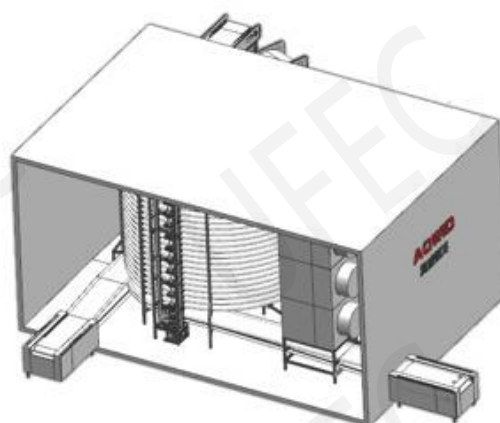
Double tower low inlet and low outlet



Single tower low inlet and low outlet



Single tower low inlet and high outlet



Single tower double inlet and double outlet

Mesh belt width range	Mesh belt length range	Spiral cooling tower diameter range	Spiral cooling tower layer number range	maximum height
200mm ~ 1300mm	50m ~ 1200m	1.5m ~ 12m	1 floor ~ 40 floors	6m



Net Belt Tunnel IQF Individual Quick Freezer

Introduction

Net belt tunnel IQF is stainless steel, the net belt has tightening device. "impinging system" with the wind device to ensure that the two-way frozen frozen goods to reduce the loss weight of frozen goods, improve product quality.



Net Belt Tunnel IQF Performance And Parameters

Model	QSDW500	QSDW750	QSDW1000
Dimensions L*W*H (mm)	11860*3250*2770	14360*3550*2770	16860*3750*2770
Input/output length	1200/850		
Effective width of mesh belt (mm)	1500	1800	2000
Required working conditions refrigerating capacity(kW)	95	140	190
Freeze capacity kg/h (Headless shrimp)	500	750	1000
Installed power(kW)	33.8	45.4	56.8



Input / output temperature	Freeze temperature
+15 °C ~ -18 °C	-35 °C ~ -38°C
Cargo-through height	Operating working conditions
50 mm~ 100 mm	R507A / R404A / R717 / R744 +35 °C / -42°C ~ -45°C



Plate Belt IQF Tunnel Individual Quick Freezer



Introduction

Plate belt IQF tunnel individual quick freezer conveyor belt is high-quality stainless steel plate, the strength is more than double times with the ordinary plate, small wave, small bending, the operation is stable and reliable. "impinging system" with the wind device to ensure that the two-way frozen frozen goods to reduce the loss weight of frozen goods, improve product quality.

Plate Belt IQF Tunnel Individual Quick Freezer Performance And Parameters

Model	QSDB500	QSDB750	QSDB1000
Input/output length	1300 / 2000		
Effective width of plate belt 1219 mm Dimensions L*W*H (mm)	12860*2900*3000	18360*2900*3000	22860*2900*3000
Effective width of plate belt 1500 mm Dimensions L*W*H (mm)	10860*3150*3000	15360*3150*3000	19860*3150*3000
Required working conditions refrigerating capacity	110	145	195
Freeze capacity kg/h(Scallop Ding)	500	750	1000
Freeze capacity kg/h(fillet)	400	600	800
Installed power(kW)	25.1	41.8	58.5

Input / output temperature	Freeze temperature
+15 °C ~ -18 °C	-35 °C ~ -38 °C
Cargo-through height	Operating working conditions
50 mm~ 100 mm	R507A / R404A / R717 / R744 +35 °C / -42 °C ~ -45 °C



Fluidized Tunnel Quick Freezer



Introduction:

Fluidized tunnel quick freezer use different way according to the different frozen products: one stage, two stage type. One stage fluidized tunnel freezer, the food in the freezing process is always in a mesh belt with the fluidized motion, therefore it is suitable to freeze for fragile food; two stage fluidized tunnel freezer, the food in the freezing process is divided into two stages, the first section is freezing the surface fast, under the pulse vibration device, food particles is not adhesive together, second section is freezing food deeply and quickly to finish the freezing job.

Fluidized Tunnel Quick Freezer Performance And Parameters

Model	XFLS1000	XFLS1500	XFLS2000	XFLS2500	XFLS3000
Dimensions L*W*H (m)	8.16*4.3*3.8	11.64*4.3*3.8	13.96*4.3*3.8	15.7*4.3*3.8	17.44*4.3*3.8
Body library length(mm)	6960	10440	12760	14500	16240
Cold consumption(kW)	170	230	290	360	430
Freezing capacity(kg/h)	1000	1500	2000	2500	3000
	50	77	96	111	133
Input /output temperature		Freeze temperature		Cargo-through height	
+15 °C~ -18 °C		-35 °C		150 mm	
Operating working conditions(°C)			Effective width of mesh belt(mm)		
R507A / R404A / R717 / R744 +35 / -42~ -45			1200		



Brine Water IQF Individual Quick Freezer



Introduction

The brine water IQF individual quick-freezer device consists of a feeding rack, an insulating box, a discharging rack, a plate belt, a transmission system, an air-cooled evaporator, evaporator, a brine evaporator, a brine circulating system, a air distribution system and an electric control system.

Brine Water IQF Individual Quick Freezer Performance And Parameters

Model	PLSD1000	PLSD2000	PLSD3000	PLSD4000
Frozen capacity(kg/h)	1000	2000	3000	4000
Brine Cooling capability(kw)	110	220	340	450
Air cooling capability(kw)	45	70	100	130
Installed power(kw)	28.5	43.5	62	66.5
Box width(mm)	2400	3500	3500	3500
Brine stage box length(mm)	9600	9600	14500	18000
Air stage box length(mm)	12000	12000	18000	23000
Mesh belt width(mm)	1000	2000	2000	2000

Evaporation emperature(°C)	Frozen temperature (°C)	Inlet and outlet temperature(°C)	Pass height(mm)
Brine -21 Air-cooled -45	Brine -15 Air-cooled -35	+10/-18	200

Horizontal Plate Quick Freezer



Introduction:

The plate quick freezer is a commonly used freezing equipment, suitable for the freezing and processing of a variety of foods, and suitable for the rapid freezing of aquatic products, pasta, cut meat and other foods.

Horizontal Plate Quick Freezer Performance And Parameters

Model	Plates Qty	Plates Size (mm)	Dimension L*W*H (mm)	Total display area(m ²)	Cooling Consumption(kw)	Freezing capacity(kg/h)
DB(Y)-720-B2	8	1260*1260	2590*1670*1770	12.7	23	720
DB(Y)-960-B2	8	1670*1260	3000*1670*1770	16.83	31	960
DB(Y)-1200-B2	10	1670*1260	3000*1870*2030	21	39	1200
DB(Y)-1500-B2	10	2080*1260	3410*1870*2030	26.21	48	1500

Layer spacing (mm)	Input / output temperature(°C)	Refrigeration conditions(°C)	Refrigerant	Installed power(kW)
55 ~ 105	+15 ~ -18	+35 ~ -35	R507/ R717 / R744 / R404A	1.5

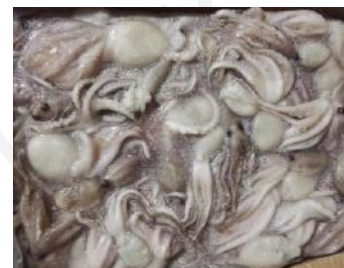


Horizontal Plate Quick-Freezer



Marine Plate Quick-Freezer

Vertical Plate Quick Freezer



Introduction

The vertical plate quick freezer is used for fast freezing seafood, meat solids, high liquid content or water based solids, fruit juices and fruit pulps in bulk on land or on vessel. Products are simply placed or poured into vertical pockets between aluminum freezing plates. After freezing, the blocks can be unloaded by defrosting and lifting the products. Within minutes the cycle can begin again.

Vertical Plate Quick Freezer Performance And Parameters

Model	Freezing capacity (kg/batch)	Plate no.	Tier pitch (mm)	Refrigeration capacity (kw)	Overall dimension (mm)
VPF15-75	600	16	75	29	2500×1500×1200
VPF20-75	800	21	75	38	3000×1500×1200
VPF25-75	1000	26	75	47	3500×1500×1200
VPF32-75	1280	33	75	61	4300×1500×1200
VPF12-100	600	13	100	29	2500×1500×1200
VPF16-100	800	17	100	38	3000×1500×1200
VPF20-100	1000	21	100	47	3500×1500×1200
VPF26-100	1300	27	100	62	4300×1500×1200

Keep Improving, Making Better Life



Compressor Unit Series

Semi-Hermetic Screw Refrigeration Compressor Unit C Series



Introduction

Semi-Hermetic screw refrigeration compressor unit C series is composed of Semi-Hermetic frequency conversion screw compressor, oil separator, oil pump, oil pump motor, frequency converter, control cabinet, valve, pressure sensor and temperature sensor, etc.

The frequency conversion adjusts the refrigeration capacity of the compressor to achieve energy saving , Efficient and stable operation.

Main Technical Parameters And Model

Model	Unit	UHSC12T	UHSC15T	UHSC16T	UHSC20T
Refrigerant		R744			
Working condition	°C	-42/-16			
Cooling capacity	kW	226	362	453	940
Rated power of motor	kW	75	110	132	250
Oil pump Motor power	kW	1.5	2.2	2.2	3
Oil injection volume	kg	120	180	180	300
Dimensions (L*W*H)	mm	2490*1100*1890	2925*1200*2330	2925*1200*2330	3360*1500*2760
Unit weight	kg	~3000	~3900	~4000	~5000

Remarks: For detailed parameters, please refer to the sample book or consult Guangwei

Semi-Hermetic Screw Refrigeration Compressor Unit F Series



Introduction

Semi-Hermetic screw refrigeration compressor unit F series consists of Semi-Hermetic screw compressor, oil separator, oil cooler, economizer (optional), oil pump, oil pump motor, control cabinet, valve, pressure sensor and temperature sensor, etc. It can be used the three-position four-way valve can be steplessly adjusted, and the refrigeration capacity of the compressor can also be adjusted by frequency conversion, which is stable and efficient.

Main Technical Parameters And Model:

Model	Unit	UBF12MT	UBF12LT	UBF16MT	UBF16LT	UBF20ST	UBF20MT	UBF20LT	UBF1612MST	UBF1612MST
Refrigerant		R507A								
Working condition	°C	-10/40								
Cooling capacity	kW	179	211	393	467	547	745	892	199	226
Rated power of motor	kW	90	90	160	200	250	315	355	160	185
Oil pump Motor power	kW	1.5		2.2			2.2 or 3		2.2	
Oil injection volume	kg	130		220			330		220	
Dimensions (L*W*H)	mm	2515*1160*1919		3168*1310*2223			3737*1440*2436		3168*1310*2233	
Unit weight	kg	~2380	~2400	~3500	~3520	~4340	~4400	~4430	~3700	~3730
Remarks: For detailed parameters, please refer to the sample book or consult Guangwei										

Semi-Hermetic Screw Refrigeration Compressor Unit A Series



Introduction

Semi-hermetic screw refrigeration compressor unit A series consists of Semi-Hermetic screw compressor, oil separator, oil cooler, economizer (optional), oil pump, oil pump motor, control cabinet, valve, pressure sensor and temperature sensor, etc. Frequency conversion adjustment compressor cooling capacity, stable and efficient operation.

Main Technical Parameters And Model

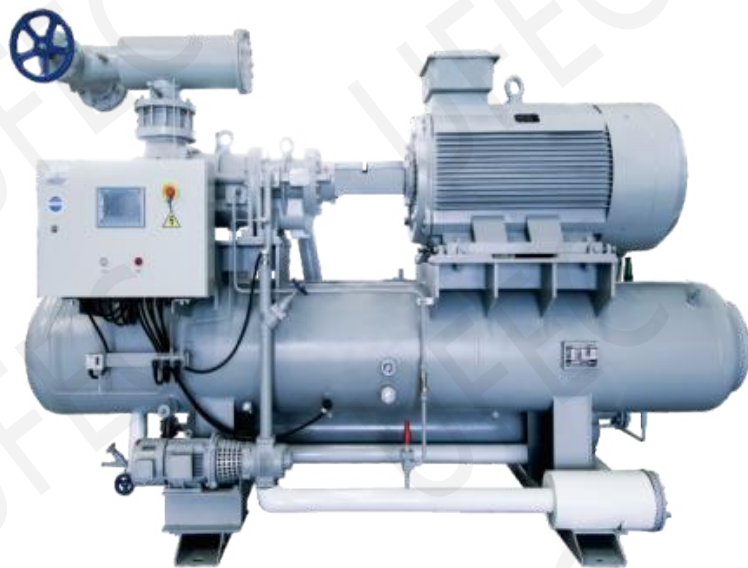
Model	Unit	UBA12MT	UBA12LT	UBA16ST	UBA16MT	UBA16LT	UBA1612MST	UBA1612LST
Refrigerant		R717						
Working condition	°C	-10/40					-35/40	
Cooling capacity	kW	183	215	276	400	474	157	185
Rated power of motor	kW	65	75	90	132	160	110	132
Oil injection volume	kg	130		220			220	220
Dimensions (L*W*H)	mm	2515*1160*1919		3168*1310*2223			3168*1310*2223	
Unit weight	kg	~2380	~2400	~3440	~3500	~3520	~3700	~3730

Remarks: For detailed parameters, please refer to the sample book or consult Guangwei

Open Type Single-stage Screw Refrigeration Compressor Unit

Introduction

The open-type single-stage screw refrigeration compressor unit consists of a single-stage screw compressor, main motor, oil separator, oil cooler, economizer (optional), oil pump, oil pump motor, control cabinet, valve, pressure sensor and temperature sensor, etc. It adopts three-position four-way valve for stepless energy adjustment, and can also adjust the refrigeration capacity of the compressor by frequency conversion, which is stable and efficient.



Main Technical Parameters And Model :

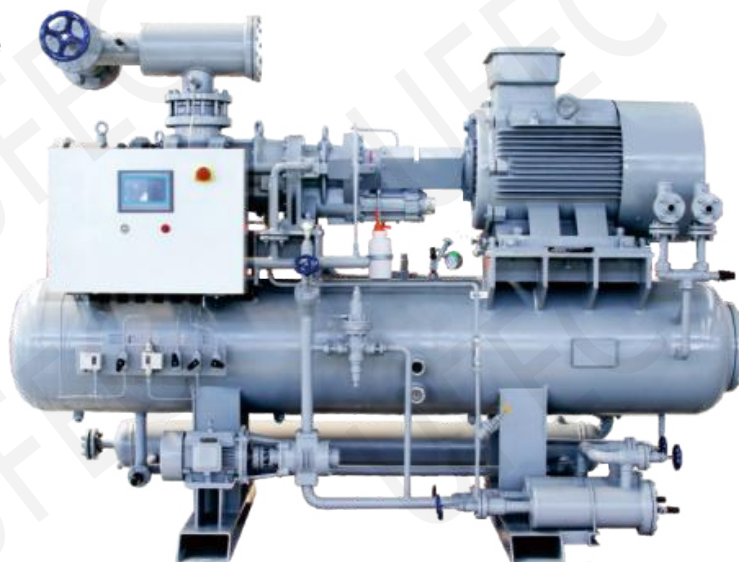
Model	Unit	UA12MT	UA12LT	UA16MT	UA16LT	UA20ST	UA20MT	UA20LT	UA25MT	UA25LT
Refrigerant		R717								
Working condition	°C	-10/40								
Cooling capacity	kW	180	213	396	469	555	756	906	1568	1958
Rated power of motor	kW	65	75	132	160	185	250	280	450	560
Oil pump Motor power	kW	1.5		2.2			2.2 or 3		4	
Oil injection volume	kg	130		220		330			780	
Dimensions (L*W*H)	mm	2515*1160*1919		3168*1310*2223		3737*1440*2436			4951*2006*3573	
Unit weight	kg	~2480	~2500	~3800	~3800	~4500	~4500	~4500	7500 ~9000	8000 ~10000

Remarks: For detailed parameters, please refer to the sample book or consult Guangwei

Open Type Compound Double-Stage Screw Refrigeration Compressor Unit

Introduction

The open-type compound double-stage screw refrigerant compressor unit consists of a compound two-stage screw compressor, main motor, oil separator, oil cooler, economizer (optional), oil pump, oil pump motor, control cabinet, valve, pressure sensor and temperature Sensors and other components, using three-position four-way valve for stepless energy adjustment, can also adjust the compressor refrigeration capacity by frequency conversion, stable and efficient operation.



Main Technical Parameters And Model :

Model	Unit	UA1612MST	UA1612LST	UA2016MST	UA2016LST	UA2520MST	UA2520LST
Refrigerant		R717					
Working condition	°C	-35/40					
Cooling capacity	kW	156	183	301	352	625	761
Rated power of motor	kW	110	132	185	200	355	400
Oil pump Motor power	kW	2.2		2.2 or 3		4	
Oil injection volume	kg	220		330		780	
Dimensions (L*W*H)	mm	3168*1310*2223		3737*1440*2316		4949*1900*2982	
Unit weight	kg	~4000		~4500		~9000	

Remarks: For detailed parameters, please refer to the sample book or consult Guangwei

Open Type Skid Double-Stage Screw Refrigeration Compressor Unit

Introduction

The skid double-stage screw refrigeration compressor unit consists of a low-pressure screw compressor, a high-pressure screw compressor, a motor, an oil separator, an oil cooler, an intercooler, an economizer, an oil pump, an oil pump motor, a control cabinet, a valve, and a pressure sensor and temperature sensor and other components.



Main Technical Parameters And Model :

Model	Unit	UA1612MST	UA1612LST	UA2016MST	UA2016LST	UA2520MST	UA2520LST
Refrigerant		R717					
Working condition	°C	-35/40					
Cooling capacity	kW	156	183	301	352	625	761
Rated power of motor	kW	110	132	185	200	355	400
Oil pump Motor power	kW	2.2		2.2 or 3		4	
Oil injection volume	kg	220		330		780	
Dimensions (L*W*H)	mm	3168*1310*2223		3737*1440*2316		4949*1900*2982	
Unit weight	kg	~4000		~4500		~9000	

Remarks: For detailed parameters, please refer to the sample book or consult Guangwei

NH₃/CO₂ Cascade Unit



Introduction

NH₃/CO₂ cascade unit include: NH₃ screw refrigerat compressor, CO₂ refrigerat screw compressor, NH₃ siphon receiver, NH₃ gas-liquid separator,condensing evaporator, CO₂ low pressure circulation receiver, CO₂ receiver, CO₂ shielded pump, CO₂ oil receiver, NH₃ oil receiver,Automatic air separator, CO₂ concentration alarm, NH₃ concentration alarm,general control box and basement etc.

Main Technical Parameters And Model

Parameter	Model	UFDC12A16M	UFDC15A16L	UFDC16A20M
Refrigerant		R717/R744		
Nominal Working conditions		-42°C/35°C		
Nominal cooling capacity		225 kW	320 kW	445 kW
Compressor unit High temperature machine model		UA16MTE	UA16LTE	UA20MTE
Compressor unit Low temperature machine model		UHSC12T	UHSC15T	UHSC16T
Compressor unit High temperature machine rated power		132kW	160kW	250kW
Compressor unit Low temperature machine rated power		75kW	110kW	132kW
Dimensions (L*W*H)mm		9000*3200*4200	9000*3200*4200	10000*3600*4750
Unit weight		~18000kg	~23000kg	~27000kg

NH₃/CO₂ Secondary Refrigerant Unit



Introduction

NH₃/CO₂ secondary refrigerant unit include: NH₃ screw refrigerant compressor, NH₃ siphon receiver, condensing evaporator, CO₂ low pressure circulation receiver, CO₂ shielded pump, NH₃ oil receiver, CO₂ concentration alarm, NH₃ concentration alarm, general control box and basement etc.

Main Technical Parameters And Model

High temperature side conditions: -35/35 °C, for low-temperature cold storage

Parameter / Model	UZLCZA1210LS	UZLCZA1612MS	UZLCZA1612LS
CO ₂ cycle temperature		-32°C	
Nominal refrigerating capacity	85 kW	165 kW	194 kW
Compressor unit model	UBF1210LST	UA1612MST	UA1612LST
Compressor unit rated power of motor	75kW	110kW	132kW
Dimensions (L*W*H)mm	3750*2350*3350	4050*2500*3350	4050*2500*3350
Unit weight	~7000kg	~7500kg	~8000kg

High temperature side conditions: -10/35°C, for high-temperature cold storage

Parameter / Model	UZLCGA12M	UZLCGA12L	UZLCGA16M
CO ₂ cycle temperature		-7°C	
Nominal refrigerating capacity	183 kW	217 kW	402 kW
Compressor unit model	UA12MT	UA12LT	UA16MT
Compressor unit rated power of motor	65kW	75kW	132kW
Dimensions (L*W*H)mm	3750*2350*3350	3750*2350*3350	4050*2500*3350
Unit weight	~6800kg	~6900kg	~7300kg

Note : Refrigerant R717 . Secondary refrigerant R744

Screw Parallel Compressor Unit



Introduction

Screw parallel compressor unit includes medium temperature series and low temperature series. The features are multi-level energy regulation ,more intelligent ,more efficient,and more energy saving.

Medium Temperature Series Technical Parameter

MODEL	POWER	COMPRESSOR MODEL	CAPACITY R22	RATED POWER	UNIT SIZE LXWXH
	HP	/	kW	kW	mm
400T-3H4000	40	3H4000	70.5	23.9	2000*1200*1500
600T-3H6000	60	3H6000	104.6	35.5	2000*1200*1500
1050T-3H10500	105	3H10500	170.9	58	2500*1300*1700
1000T-3H5000*2	100	3H5000	179.4	60.8	2800*1300*1700
1500T-3H7500*2	150	3H7500	245	83.2	2800*1600*1700
1200T-3H4000*3	120	3H4000	211.5	71.7	3300*1300*1750
1500T-3H5000*3	150	3H5000	269.1	91.2	3300*1300*1750
2700T-3H9000*3	270	3H9000	425.1	144.3	3300*1600*1750
2000T-3H5000*4	200	3H5000	328.8	121.6	3850*1300*1750
2400T-3H6000*4	240	3H6000	418.4	142	3850*1300*1750
3600T-3H9000*4	360	3H9000	566.8	192.4	3850*1600*1750

Semi-Hermetic Piston Compressor Unit

Introduction :

The compressor unit is with original semi-hermetic reciprocating compressors. Applicable for medium and low temperature. Beautiful design, rational construction and convenient installation made the units widely used in hotel, restaurant, medical, agricultural, chemical industry, and all other filed where cold storage is needed.

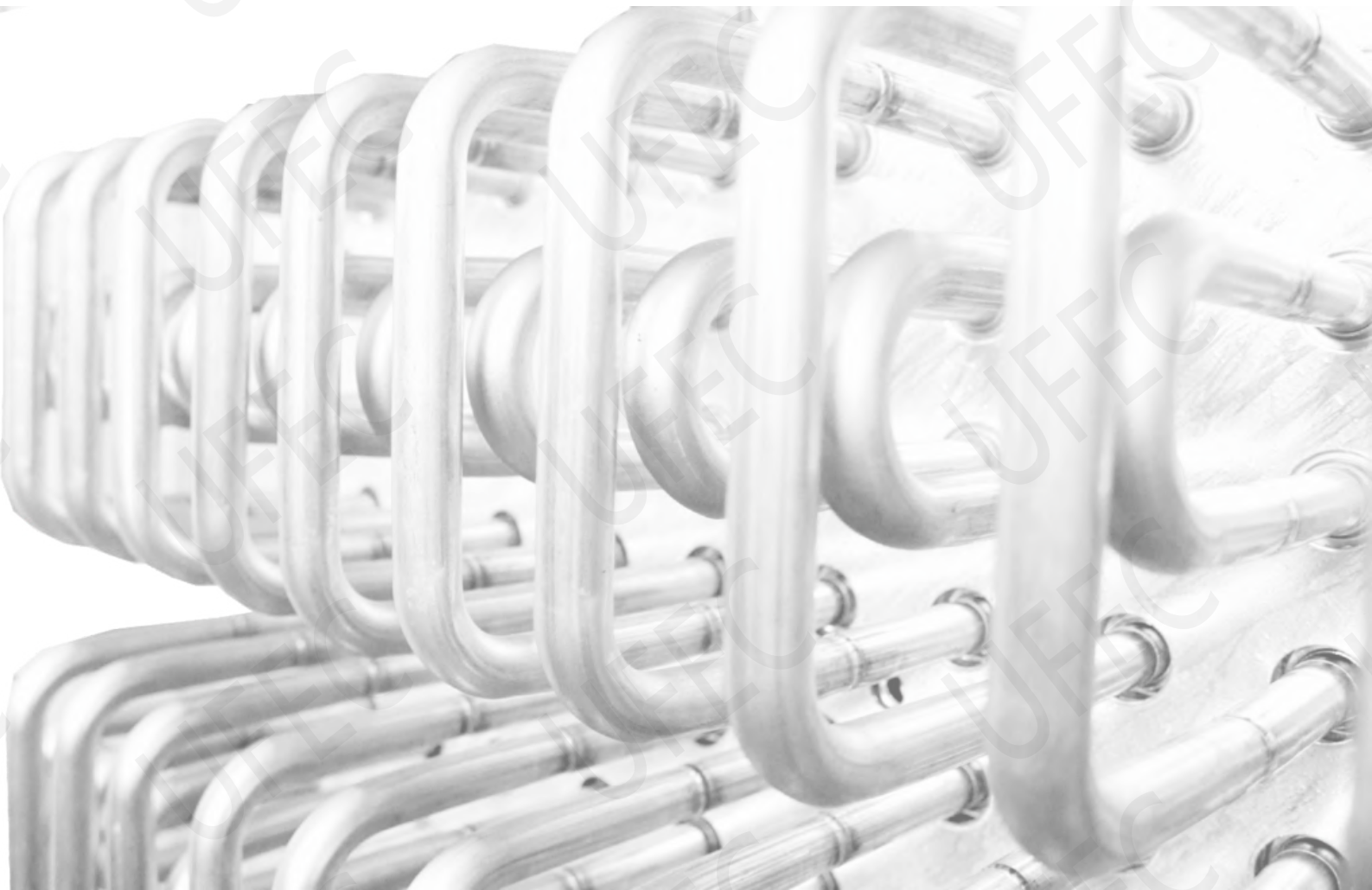


Semi-Hermetic Piston Compressor Unit Technical Parameter :

Model	Compressor (R404A/R507A)	Cooling Capa. (W)	Comp.Power Input(KW)	Cooling Capa. (W)	Comp.Power Input(KW)	Temp. Range (cold room)
		EvaT=-5°C;50HZ		EvaT=-15°C;50HZ		
GWZL-18N2BY	4TES-9Y	48400	20.36	29920	16.64	-5°C~5°C
GWZL-36N2BY	4HE-18Y	88400	36.78	56000	30.6	-5°C~5°C
GWZL-68N2BY	6GE-34Y	150400	65.4	97200	54.8	-5°C~5°C
GWZL-88N2BY	6FE-44Y	180600	77.8	116400	65.2	-5°C~5°C
GWZL-42N3BY	4NES-14Y	98700	40.89	60900	33.69	-5°C~5°C
GWZL-54N3BY	4HE-18Y	132600	55.17	84000	45.9	-5°C~5°C
GWZL-102N3BY	6GE-34Y	225600	98.1	145800	82.2	-5°C~5°C
GWZL-132N3BY	6FE-44Y	270900	116.7	174600	97.8	-5°C~5°C
GWZL-36N4BY	4TES-9Y	96800	40.72	59840	33.28	-5°C~5°C
GWZL-48N4BY	4PES-12Y	110400	45.16	67400	36.68	-5°C~5°C
GWZL-56N4BY	4NES-14Y	131600	54.52	81200	44.92	-5°C~5°C
GWZL-72N4BY	4HE-18Y	176800	73.56	112000	61.2	-5°C~5°C
GWZL-92N4BY	4GE-23Y	204000	88	130400	72.84	-5°C~5°C
GWZL-136N4BY	6GE-34Y	300800	130.8	194400	109.6	-5°C~5°C
GWZL-176N4BY	6FE-44Y	361200	155.6	232800	130.4	-5°C~5°C

Note : The compressor unit can be customized according to requirements. For more information please contact us.

Keep Improving, Making Better Life



Evaporator And Condenser Series

Ceiling Type Air Cooler (Copper/Aluminum Tube Aluminum Fin)



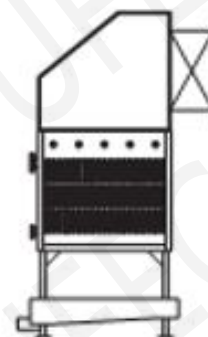
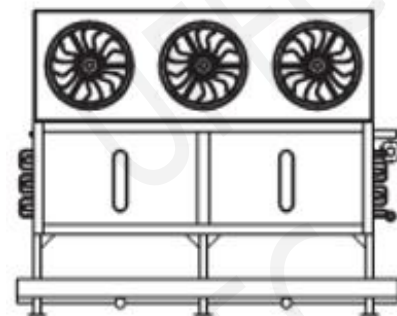
Introduction

The air cooler evaporator with Copper/Aluminum Pipe Aluminum Fin uses advanced heat exchange geometric structure and improved processing technology. Coil type: copper pipe aluminum fin/efficient copper pipe aluminum fin/aluminum pipe aluminum fin(When the refrigerant is ammonia, we use only aluminum tube). Mounting type: Hung ceiling/Wall Mounted/Floor type. Axial fan quantity: 1 set/2 sets/3 sets/4 sets. Air supply method :Single-sided air supply and Double Side Wind Blown. The Air Cooler evaporator can be customized.

Ceiling/Wall Mounted Air Cooler (Copper/Aluminum Pipe Aluminum Fin) Performance And Parameters

Model	Refrigerating capacity(kW)		Evaporation area m ²	Tube volume (L)	Fan model (Voltage 400V,50Hz)		
	DT1=8K evaporating temp. -8°C	DT1=7K evaporating temp. -25°C			Blade diameter (mm)	Power (kw)	Air flow (m ³ /h)
D45-50E/14F-T	6.7	5.2	49.4	7.39	450	0.54	5800
D45-100E/24F-T	13.8	10.6	101.2	14.78	450	0.54*2	5800*2
D45-150E/34F-T	20.1	15.5	147.9	22.09	450	0.54*3	5800*3
D45-200E/44F-T	26.9	20.8	197.8	29.57	450	0.54*4	5800*4
D50-65E/14F-T	8.7	6.7	63.9	9.53	500	0.83	7400
D50-130E/24F-T	17.7	13.7	130.1	19.05	500	0.83*2	7400*2
D50-190E/34F-T	25.9	20	190.5	28.48	500	0.83*3	7400*3
D50-255E/44F-T	34.7	26.8	254.7	38.11	500	0.83*4	7400*4
D71-435E/37F-T	68	54.3	435.6	43.71	710	1.75*3	14000*3

Floor Type Air Cooler (Copper/Aluminum Tube Aluminum Fin)



Floor Mounted Air Cooler

Floor Mounted Air Cooler (Copper/Aluminum Pipe Aluminum Fin) Performance And Parameters

Model	Heat exchange area (m ²)	Refrigerating capacity	Tube volume (L)	Fan mode (Voltage 400V, 50Hz)			
		DT1=10K evaporating temp. (-10°C)		Blade diameter (mm)	Power (kW)	Air flow (m ³ /h)	Noise (dB)
L50-110W/1817F	100.2	21.58	18.4	500	1.1	10000	75
L63-150W/1817F	145.9	32.38	25.5	630	1.5	15000	77
L50-205W/2817F	201.5	44.32	33.6	500	1.1*2	10000*2	76
L56-260W/2817F	255.8	55.87	41.7	560	1.1*2	11100*2	77
L63-310W/2817F	303.5	66.35	48.9	630	1.5*2	15000*2	78
L63-360W/2817F	352.6	76.83	56.5	630	1.5*2	16500*2	78
L63-410W/2817F	405.3	88.15	63.7	630	2.2*2	22000*2	80
L63-460W/3817F	450.8	97.85	70.9	630	1.5*3	15000*3	79
L63-510W/3817F	509.2	109.88	80.6	630	1.5*3	16500*3	79

Air Cooler (Stainless Steel Tube Aluminum Fin)



Introduction

The Air Cooler evaporator with Stainless Steel Tube Aluminum Fin uses New material with high strength, corrosion resistant heat . Coil type:copper pipe aluminum fin/efficient copper pipe aluminum fin/aluminum pipe aluminum fin(When the refrigerant is ammonia, we use only aluminum tube).Mounting typ:Hung ceiling/Wall Mounted/Floor type.Axial fan quantity:1set/2sets/3sets/4sets.Air supply method :Single-sided air supply and Double Side Wind Blown. The Air Cooler evaporator can be customized.

One Set Axial Fan Performance And Parameters

Model	Normal conditions heat exchange (kw)		Evaporation area m ²	Tube volume (L)	Fan		
	R717 te=-8 °C Δtm=8 °C (kw)	R717 te=-25 °C Δtm=7 °C(kw)			Air flow (m ³ /h)	Power (kw)	Air Throw (m)
D50- 110/14A-NL	15.65	12.91	110	15.4	7300	0.83	20
D45- -60/17A-NL	9.55	8.04	60	14.0	5400	0.54	17
D45- -45/110A-NL	7.45	6.3	45	14.0	5700	0.54	18
D50-55/1816A-NL	10.41	8.84	55	20.6	7900	0.83	22



Air Cooler (Stainless Steel Tube Aluminum Fin)

Two Sets Axial Fan Performance And Parameters

Model	Normal conditions heat exchange (kw)		Evaporation area m ²	Fan		
	R717 te=-8°C Δtm= 8°C(kw)	R717 te=-25°C Δtm= 7°C(kw)		Air flow (m ³ /h)	Power (kw)	Air Throw (m)
D45- 150/24A-NL	21.2	17.48	150	5150*2	0.54*2	16
D50- 170/27A-NL	27.78	23.42	170	7500*2	0.83*2	21
D71-185/212A-NL	36.14	30.78	185	15100*2	1.75*2	30
D80-274/2816A-NL	56.08	48.18	274	20700*2	1.9*2	36

Three Sets Axial Fan Performance And Parameters

Model	Normal conditions heat exchange (kw)		Evaporation area m ²	Fan		
	R717 te=-8°C Δtm=8°C (kw)	R717 te=-25°C Δtm=7°C(kw)		Air flow (m ³ /h)	Power (kw)	Air Throw (m)
D45-225/34A-NL	31.8	26.22	225	5150*3	0.54*3	17
D50-260/37A-NL	41.67	35.13	260	7500*3	0.83*3	22
D71-320/310A-NL	60.81	52.11	330	14700*3	1.75*3	30
D80-400/312A-NL	79.23	67.65	400	21000*3	1.9*3	38
D45-110/3816A-NL	21.60	18.3	111	5780*3	0.54*3	19

Four Sets Axial Fan Performance And Parameters

Model	Normal conditions heat exchange (kw)		Evaporation area m ²	Fan		
	R717 te=-8°C Δtm=8°C (kw)	R717 te=-25°C Δtm=7°C(kw)		Air flow (m ³ /h)	Power (kw)	Air Throw (m)
D45-295/44A-NL	42.4	34.96	295	5150*4	0.54*4	17
D45-235/47A-NL	φ45.2	32.16	235	5400*4	0.54*4	18
D50-250/410A-NL	43.4	36.6	250	7800*4	0.83*4	23
D45-145/412A-NL	26.6	22.36	145	5850*4	0.54*4	19
D50-217/4816A-NL	41.64	35.36	217	7900*4	0.83*4	23

Evaporation Condenser



Introduction:

We design the evaporation condenser with advantages of novelty, unique and reasonable. Suitable for environment friendly refrigerants (such as R717, R404A, R507A, etc.). Reasonable design all meet the conditions of container transport, simple and convenient (half-half or break up).

ZNX II series the set of heat exchange tube, oval high-frequency welded pipe and the flow of the liquid in the pipe and the pipe outer surface form a uniform water film, enhanced heat transfer effect.

ZNX II Series Evaporation Condenser Parameters And Model

Model	Normal conditions heat exchange	Weight (kg)	Fan air flow (m³/h)	Fan power (kw)	Water pump Water volume(L/s)	Water pump power(kw)	Refrigerant charge(kg)
ZNX II -320	322	1680	30000	2.2	9.4	0.75	50
ZNX II -400	402	2000	50000	2.2*2	9.4	0.75	62
ZNX II -560	565	2680	60000	2.2*2	12.7	1.1	87
ZNX II -640	645	3200	60000	2.2*2	18.1	1.5	100
ZNX II -800	805	3930	90000	2.2*3	22.2	2.2	114
ZNX II -960	962	4400	90000	2.2*3	36.1	3.0	136
ZNX II -1100	1105	5130	120000	4*2	36.1	3.0	156
ZNX II -1200	1203	5550	120000	4*2	36.1	3.0	168
ZNX II -1300	1304	5980	120000	4*2	36.1	3.0	184
ZNX II -1400	1406	6440	120000	4*2	36.1	3.0	193
ZNX II -1500	1505	6900	150000	5.5*2	36.1	3.0	212
ZNX II -1600	1603	7520	150000	5.5*2	47.2	4.0	226
ZNX II -1700	1701	7910	150000	5.5*2	47.2	4.0	240
ZNX II -1800	1804	8640	150000	5.5*2	47.2	4.0	252

Evaporation Condenser



Introduction :

SZNX II series the tube is oval type which is good for refrigerant flowing inside and good for water layer formatting on the tube surface so that to enhance heat-exchange. There is polyethylene heat exchange layer under the coil. Fresh cool air gets into the machine and cools both the coil and the layer. On the way the water dropping to the water tank, the layer will cool the water again to enhance the heat exchange result.

The air and water get in to the machine in same direction which will effectively speed up water flow and reduce the filth appear on the condensing tubes.

SZNX II Series Evaporation Condenser Parameters And Model

Model	Nominal Heat Exchange (KW)	Fan		Water Pump		Ammonia Filled In(kg)	Tube Connection Dimension(mm)	
		Air Flow	Power (kw)	Volume (L/s)	Power (kw)		Vapour In	Liquid Out
SZNX- II -300	305	6000	2.2x2	12.4	2.2	35	DN100	DN65
SZNX- II -400	405	6000	2.2x2	12.4	2.2	45	DN100	DN65
SZNX- II -550	555	6000	2.2x2	12.4	2.2	61	DN100	DN65
SZNX- II -600	605	6000	2.2x2	12.4	2.2	67	DN100	DN65
SZNX- II -700	706	9000	2.2x3	13.9	3	83	DN100	DN65
SZNX- II -800	805	9000	2.2x3	13.9	3	88	DN100	DN65
SZNX- II -1000	1005	12000	2.2x4	24.7	4	110	DN125	DN65
SZNX- II -1200	1206	12000	2.2x4	24.7	4	134	DN125	DN65
SZNX- II -1400	1407	15000	2.2x6	27.8	5.5	154	DN100x2	DN65x2
SZNX- II -1500	1503	15000	2.2x6	27.8	5.5	166	DN100x2	DN65x2

Air Cooled Condenser

V Type Air Cooled Condenser

Air-cooled condenser is a kind of heat dissipation device of refrigeration equipment, and its medium is air. We provide three types, FLV is V type, FLSV is V box type, FLN is side exhaust



Model	Heat Exchange (W)	Heat Exchange Area (m ²)	Outer Rotor Motor				Inlet And Outlet Pipe Diameter	
			Quantity	Diameter (mm)	Power (w)	Air Volume (m3/h)	Intake	Liquid
FLV-100	30000	100	2	500	2x420	13000	25	19
FLV-120	36000	120	2	550	2x550	15000	25	19
FLV-140	42000	140	2	550	2x550	15000	35	22
FLV-160	48000	160	2	550	2x550	15000	35	22
FLV-180	54000	180	2	630	2x850	21600	35	22
FLV-200	60000	200	2	630	2x850	21600	35	22
FLV-220	66000	220	2	630	2x850	21600	35	22
FLV-240	72000	240	3	550	3x550	22500	35	22
FLV-260	78000	260	3	550	3x550	22500	35	22
FLV-280	84000	280	3	630	3x850	32400	35	22
FLV-300	90000	300	3	630	3x850	32400	35	22

Air Cooled Condenser

Side Exhaust Air Cooled Condenser

Shape design air-cooled condenser design :

- Use 3/8" copper tube design;
- The fins are designed with hydrophilic aluminum foil;
- Heat exchange efficiency is high;
- The coil adopts copper tube staggered arrangement;

Motor application :

- Fan: brand external rotor motor;
- Model 400~630;
- Insulation class: F;
- Waterproof rating: IP55;



Model	Heat Exchange (W)	Heat Exchange Area (m ²)	Outer Rotor Motor				Inlet And Outlet Pipe Diameter	
			Quantity	Diameter (mm)	Power (w)	Air Volume (m ³ /h)	Intake (mm)	Liquid (mm)
FLN-22	6600	22	1	400	1x230	3500	19	16
FLN-35	10500	35	1	500	1x420	6500	19	16
FLN-50	15000	50	1	550	1x550	7500	25	19
FLN-80/2	24000	80	2	500	2x420	13000	25	19
FLN-100/2	30000	100	2	550	2x550	15000	28	19
FLN-120/4	36000	120	4	400	4x230	14000	32	22
FLN-140/4	42000	140	4	400	4x230	14000	32	22
FLN-160/4	48000	160	4	500	4x420	26000	35	22
FLN-180/4	54000	180	4	500	4x420	26000	35	22
FLN-200/4	60000	200	4	500	4x420	26000	35	22

Air Cooled Condensing Unit

V Shape Box Type Air Cooled Condensing Unit

- Shape design
- corrosion resistance;
- large bottom space;
- suction effect is better;
- beautiful appearance;
- low operating noise;
- easy maintenance;
- heat exchange efficiency is high;



Model	Heat exchange (W)	Heat exchange area (m ²)	Outer rotor motor				Inlet And Outlet Pipe Diameter	
			Quantity	Diameter (mm)	Power (w)	Air Volume (m ³ /h)	Intake	Liquid
FLSV-100	30000	100	2	500	2x420	13000	25	19
FLSV-120	36000	120	2	550	2x550	15000	25	19
FLSV-140	42000	140	2	550	2x550	15000	35	22
FLSV-160	48000	160	2	550	2x550	15000	35	22
FLSV-180	54000	180	2	630	2x850	21600	35	22
FLSV-200	60000	200	2	630	2x850	21600	35	22
FLSV-220	66000	220	2	630	2x850	21600	35	22
FLSV-240	72000	240	3	550	3x550	22500	35	22
FLSV-260	78000	260	3	550	3x550	22500	35	22
FLSV-280	84000	280	3	630	3x850	32400	35	22
FLSV-300	90000	300	3	630	3x850	32400	35	22

Open Type Water Cooling Tower



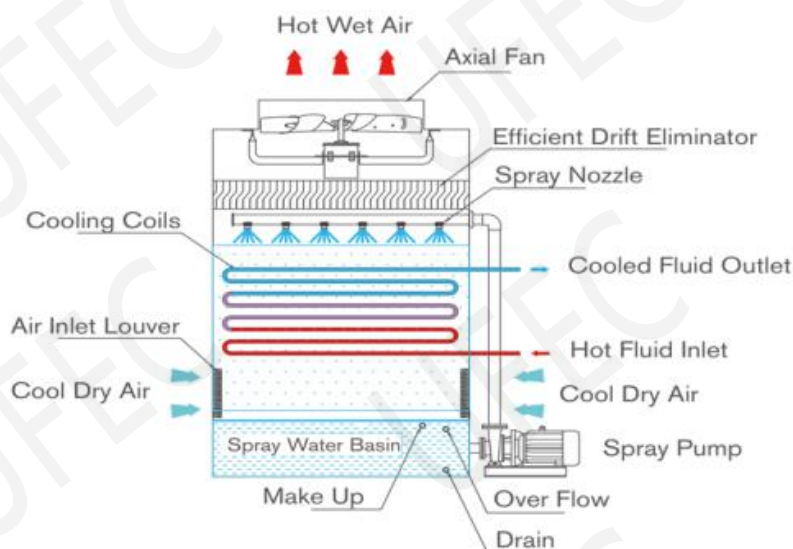
Introduction:

The open type water cooling tower is designed for power and water saving in industry, cooling tower innovated in a special way for heat exchange, which makes hot water get the lower temperature for circulating use. The water cooling tower is mainly composed by motor, fan, sprinkler head, filler, casing, basing and air intake louver. Cooling tower is mainly used for cooling in air conditioning system, frozen series, injection molding, leather, foam, power generation, steam turbine, aluminum processing, air compressors, industrial cooling water and other fields.

Water Cooling Tower Technical Parameters :

Model	Voltage	Flow	Fan diameter	Motor power	Dimension	Net weight	Working weight
GWZL-OWCT1	220V	3m ³ /H	300MM	0.038KW	1200*650	35kg	85kg
GWZL-OWCT2	380V	6m ³ /H	585MM	0.18-6KW	1520*930	53kg	133kg
GWZL-OWCT3	380V	16m ³ /H	760MM	0.37-6KW	1900*1250	85kg	300kg
GWZL-OWCT4	380V	50m ³ /H	885MM	1.1-8KW	2450*1870	220kg	730kg
GWZL-OWCT5	380V	70m ³ /H	1190MM	1.5-8KW	2680*2350	460kg	1023kg
GWZL-OWCT6	380V	80m ³ /H	1470MM	2.2-12KW	2760*2520	650kg	1050kg
GWZL-OWCT7	380V	250m ³ /H	2400MM	5.5KW	4350*4500	2121kg	3876kg
GWZL-OWCT4	380V	300m ³ /H	3000MM	7.5KW	4900*4900	2235kg	3390kg

Closed Type Water Cooling Tower



Introduction:

The closed cooling tower USES water and coils to transfer heat through the wall of the pipe to transfer the heat of the cooling medium in the coils to reach the cooling purpose. Closed cooling tower of circulating water in the cooling tower inner loop only contact with the air heat exchange cooling coil again take plate heat pipe working medium, the filling water pipe hydrating properly, compared to the open type cooling tower, the most obvious characteristics of closed cooling tower is to increase the coil, in need of cooling liquid working medium flow in the steel plate of tube is not direct contact with water, through the wall heat transfer.

Closed Type Water Cooling Tower Technical Parameters :

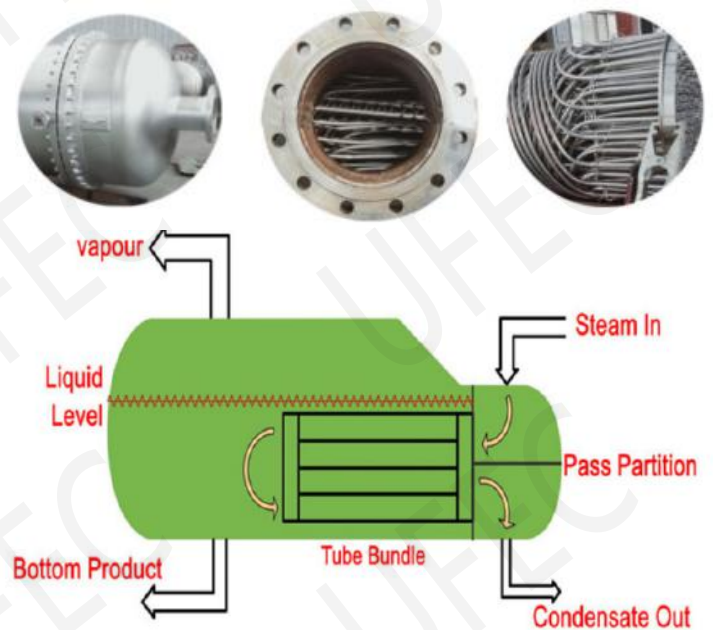
Model	Nominal Flow Rate (Ton)	Fan Power (kW)	Fan Air volumn (m³/h)	Circulating Pump Power(kW)	Circulating Pump Air volumn(m³/h)	Overall Dimensions (mm)	Weight (kg)
GWZL-WCT1	30	1.1*2	13000*2	1.5	45	2540*1940*2200	1020
GWZL-WCT2	79	1.5*3	18200*3	2.2	60	3360*1940*2730	1520
GWZL-WCT3	134	1.5*4	18200*4	2.2	114	4220*2240*2840	2250
GWZL-WCT4	183	2.2*4	22500*4	3.7	140	5440*2240*2910	3200
GWZL-WCT5	274	4*4	60000*4	5.5	160	6420*2600*3660	5500
GWZL-WCT6	366	4*4	60000*4	5.5	160	6420*2900*3260	7000

Titanium Shell And Tube Heat Exchanger



Introduction:

Titanium shell and tube heat exchanger plays an important role in chemical, petroleum, power, food and many other industrial production. In chemical production, it can be used as heater, cooler, condenser, evaporator and reboiler. It is an inter wall heat exchanger with the wall of the tube bundle enclosed in the shell as the heat transfer surface. This kind of heat exchanger is simple in structure and reliable in operation. It can be made of various structural materials (mainly metal materials) and can be used under high temperature and high pressure. It is the most widely used type at present.



Titanium Shell And Tube Heat Exchanger	
Material	pure titanium
Tube	φ8, φ10, φ12, φ14, φ16, φ19, φ25etc.
Heat exchanger area	0.1m ² - 1000m ²
Application	oil, chemical, pharmacy, food, electricity, paper,etc
Installation type	Horizontal/Vertical



Plate Type Heat Exchanger



Introduction:

The plate type heat exchanger is composed of a group of corrugated metal plants. The holes on it form channel for liquids to flow, and the heat will be transferred between two kinds of liquids. The sealing gaskets play the sealing function on the channels between plates and make the liquids flow into adjacent channels.

Plate Type Heat Exchanger Technical Parameters:

Plate Material	Body Material	Gasket Material	Max Working Pressure	Working temperature	Cooling	Size
304 or 316L	304	NBR, EPDM, etc	3Mpa	-10°C - +150°C	Single stage or two stages	1m ² , 3m ² , 5m ² , 7m ² , 10m ²

Model Number	Plate Size (L*W*H)	Channel	Heat Exchange Area (M ²)	Flow (T/H)	Plate Quantity	Connect Size
PHE-0.06	160*500*0.5	Single Channel	1	0.5	17	32mm
PHE-0.06	160*500*0.5	Double Channel	3	1.5	20+31	32mm
PHE-0.13	200*800*0.4	Double Channel	5	2.5	15+24	38mm
PHE-0.13	200*800*0.4	Double Channel	7	3	22+33	38mm
PHE-0.13	200*800*0.4	Double Channel	10	5	31+46	38mm



Brazed Plate Heat Exchanger

Plate: Metal plate is corrugated to improve heat transfer coefficient

Channel: Be made of two adjacent plates.



Typical Applications are follow:

- District heating/heating and ventilation
- Solar heating and air-conditioning units
- Heating pumps and heat recovering units
- Hydraulic oil units
- Refrigeration
- Compress air units



Plate Type Heat Exchanger Technical Parameters:

Capacity range	0.1m ³ /h to 300m ³ /h
Operating pressure	≤4.5MpaG
Operating temperature	≤250°C
Plate material	Stainless steel 304/316
Welding material	Copper, nickel



Evaporator Coil



Introduction

Evaporator coil is of reasonable structure, good compatibility and can be matched with various compressors. Different refrigerants like R22 ,R134a and R407c are workable. The air cooled evaporators are tested under air pressure 2.875MP,guaranteeing the products' high gas tightness.

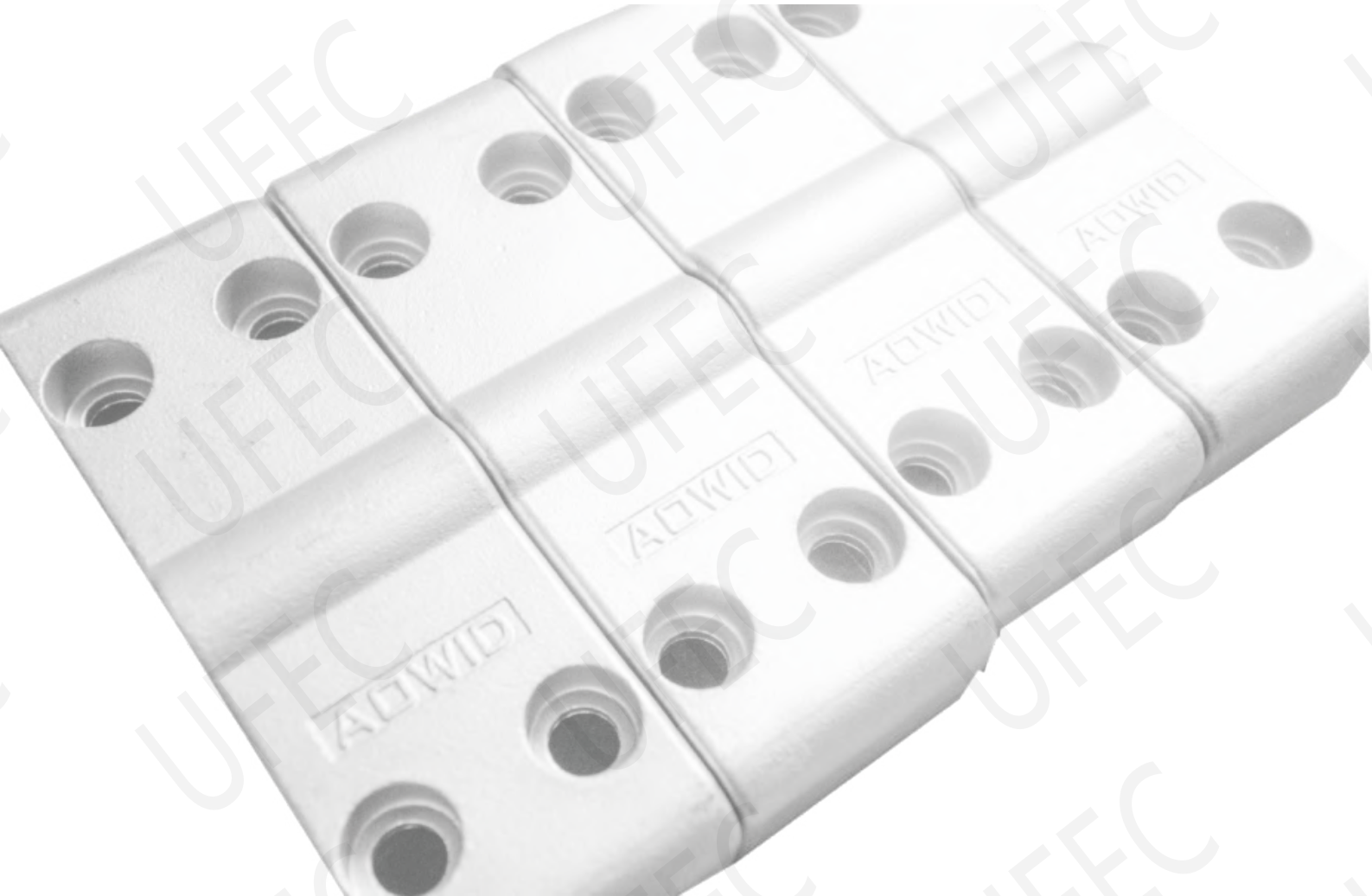
Evaporator Coil Technical Parameters:

Model	Heat exchanging area (m ²)	Dimensiong:(mm)	Frontal area (m ²)	No tube rows	Number of fin tubes(pcs)
EA-11	10.92	610*542*130	0.279	2	12
EA-12	56.19	1070*542*190	0.279	4	12
EA-13	65.52	610*782*330	0.418	8	18
EA-14	98.23	1220*782*260	0.418	6	18

Part Name	Material
TUBE	Copper, Titanium, Aluminum, Carbon steel, Stainless steel 304, Stainless steel 316, Cu-Ni(90/10), Cu-Ni(70/30)
FIN	Copper, Aluminum, Stainless steel, Carbon steel, Titanium
FRAME	Galvanized, Stainless steel, Aluminum



Keep Improving, Making Better Life



Equipment Of Cold Chain Logistics Series And Racking System

Cold Room Door



CDLM(T) Intelligent synchronous automatic cold room door



DSYM Automatic vertical overhead Door



RZLM(D) Buffer Door
Dedicated For The Ante-Room



QLM Control Atmosphere Storage Door



PLM Manual vertical hinged door



DC motor gear rack drive door



CDLM Series Auto Gear Rack Drive Door

Cold Room Door

General Solution For Gallery In Processing Room



Logistics Docking System

Logistics Docking System



Cold Room Door Accessories

Centrifugal Air Curtain for Cold Room



Including Various Types Of Hinges, Hinges, Locks, Safety Handles, Etc.



Racking System

Drive-in Rack



Drive-in racks can be used for forklifts (or unmanned trucks with forks) to drive into the channel to access the goods, which is suitable for the storage of goods with small varieties and large batches. Except for the cargo space close to the aisle, because the forklift needs to enter the shelf to store and retrieve the goods, it is generally recommended that the single-sided pickup does not exceed 7 cargo space depths. In order to increase the operating speed of forklifts, guide rails can be selected according to actual needs. Compared with beam racks, the storage space utilization rate of drive-in racks can be increased by more than 30%. It is widely used in wholesale, cold storage, food and tobacco industries.

Racking System

Push Back Shelf



Push-back racks are also called press-in racks, which are composed of beam racks, rails, and trolleys. The trolley adopts a nested arrangement to run on a track with a set oblique angle. The goods entering later will be pushed into the goods first. When picking up the goods, the outermost pallet will be taken first. When the outer goods are taken out, the inner goods will automatically slide down by gravity. Realize first-in-last-out storage.

Racking System

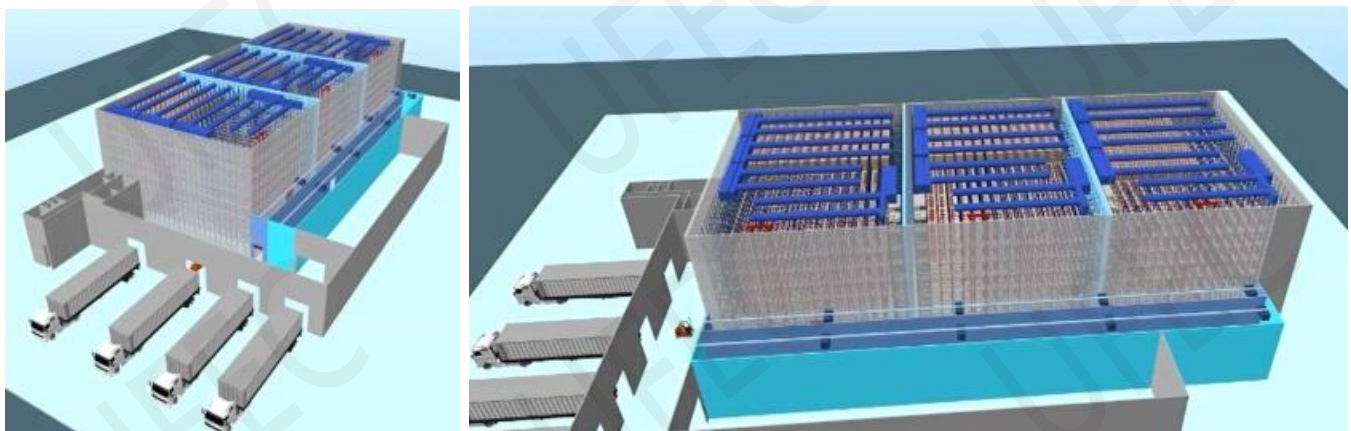
Double-Deep Shelf

Double-deep shelf is also called double-deep shelf. It is a type of shelf that uses a scissor forklift and the shelves are designed to be stored side by side in two rows.

The characteristics are: high utilization rate of warehouse, good selectivity, special forklifts, and roadway dimensions are the same design as APR



Racking System



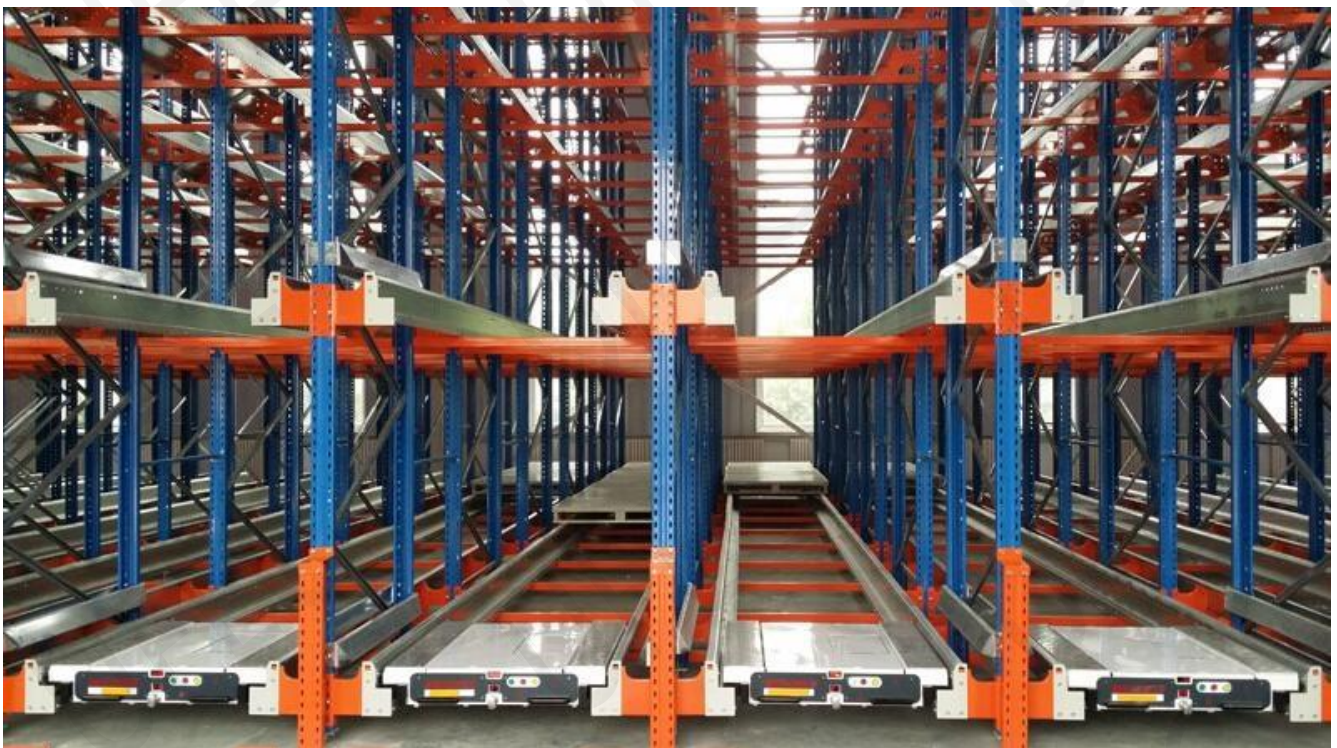
The warehouse and shelf integrated warehouse does not need to build a separate warehouse. The shelf itself serves as the supporting structure of the warehouse, and the roof and side wall panels are closely connected to the shelf. The construction time is greatly saved. The roof and side wall panels can be installed simultaneously when the rack is installed, and the wind and earthquake resistance of the rack system is enhanced at the same time. It is suitable for warehouses with large storage capacity and relatively regular unit shelves.

Racking System

Shuttle Rack



The shuttle storage system adds high-precision guide rails to the traditional racks to allow the shuttle to run smoothly. The guide rails simultaneously undertake the functions of cargo transportation and storage, thereby greatly improving the utilization of storage space.



Racking System

Smart shuttle



The shuttle is an intelligent robot that can be programmed to perform tasks such as picking up, transporting, and placing, and can communicate with the host computer or WMS system, combined with RFID, barcode and other identification technologies, to achieve automatic identification, access and other functions.

Horizontal Speed	max.200 m/min
Running Acceleration	0.5 m/s ²
specified Load	700-1500kg
Power supply	Safety trolley
Targeting	Laser/barcode positioning
way of communication	Infrared/wireless
positioning accuracy	±5mm

Keep Improving, Making Better Life



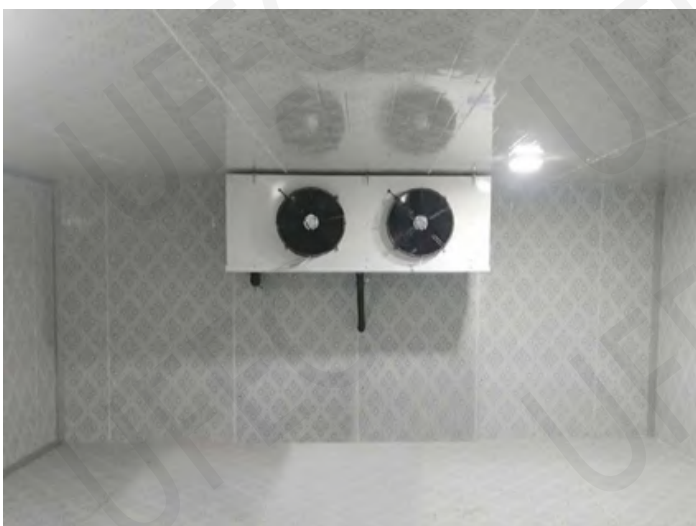
Cold Storage Series

Prefab Cold Store



Prefab Cold Store Introduction:

Prefab cold store is a walk-in storage facility in controlled condition to keep a consistent temperature, it is widely used to preserve the quality of stored products like fruit, vegetables, beverages, flowers, beef and chicken meat, seafood, medicine, cheese, eggs and other fresh foods. The applications of cold rooms include foods and beverages packaging, short and long term products cold storage as well as blastfreezing.



Cold Room Panels	Insulating Polyurethane foam board
Door Type	Sliding Door, Swing Door
Condensing Unit	Bitzer, Copeland, Danfoss, Etc
Application	Vegetables, Fruit ,Food cooling or Fish, Shrimp, Crap freezing under different temperature.
Optional	To use Non-slip aluminum/ Color Steel/Embossed aluminum sheet on the surface of panels

Prefad Cold Store (Monoblock Unit)



Compressor & air cooler refrigeration monoblock unit

Parameter range:

Dimension	Length(m)*Width(m)*Height(m)Customized
Refrigeration unit	Copeland/Bitzer/Emerson/Danfoss/Cabero/Siemens/LG
Refrigeration type	Air cooled/water cooled/evaporation cooled
Refrigerant	R22.R404a.R447a.R448a.R449a,R507a.R717
Defrost Type	Electric/Water defrosting
Voltage	220V/50Hz.220V/60Hz.380V/50Hz.380V/60Hz.440V/60Hz optional
Panel	New material polyurethane insulation panel 43kg/m3
Panel thickness	50mm, 75mm, 100mm, 150mm,200mm
Type of door	Hanged door,sliding door,double swing electric sliding door,truck
Temp. of room	-60°C-+20°C
Functions	Fruit,vegetable,flower,fish,meat.chicken.medicine.chemical.electronics.etc
Fittings	All necessary fittings are included,optionallnd
Place to assemble	Indoor/outdoor(concrete construction building/steel construction building)



Ripening Chamber



Introduction:

Our ripening chamber not only provides refrigeration and cooling units needed but also supply to specialized equipment needed for fruits ripening namely ethylene generator, ripening control system, air analysis kit for continuous monitoring levels of CO₂, humidity and ethylene level. High quality equipment are only used which ensure uniform air distribution, maintenance of humidity and prevent over ripening of fruits or vegetable. The ripening chamber is customized production.



Container Cold Storage



Introduction:

Container cold storage has cooling machine, is designed for the carriage of deep frozen, frozen and chilled (excluding hung-chilled meat) cargoes in the range of -25°C to +25°C. The container is suitable to be subjected to severe thermal shock with external temperature ranging from -40°C to +50°C. Used in Seafood, Medician, Meat, Fish, Food, Ice-cream, Fruit, Flower, Vegetables Cold Room.

Name	Container Cold Room
Component	Room body insulation parts; Refrigeration part; Distribution box & cold room lights & alert control
Room body insulation parts	PU panel (50mm~250mm) double PPGI sheet; Underside insulated extruded board; Foamed sealant; Hand sliding door
Refrigeration part	Condensing unit; D series Evaporator; Dry filter; Heat expansion valve; Magnetic valve; Freezing medium; Copper pipe line; Pipe link; Pipe insulation
Distribution box & cold room lights & alert control	Intelligent distribution box; Groove and hose; Lights; Electric wire
Compressor brand	Gree, Copeland, Bitzer, Taikang, Refcomp, Hanbell
Dimensions	20ft 40ft
Panel Connection Type	Cam Lock



Compressor Condensing Unit



Introduction

Our condensing units have medium temperature(-5C~+10C), low temperature (-15C~-30C) and deep blast temperature(-25~-40C). It is equipped with the original new Bitzer compressor, high efficiency corrosion proofing design evaporator and condensers. What's more, for other accessories, we stick to best brand, like Danfoss, Schneider, Dixell.

Main Technical Parameters And Model



Specifications for 3HP Bitzer compressor condensing unit

Compressor	Compressor model	2DES-37	Original Brand
	Input power	2.92kw	-10~+15 °C
	Cooling capacity	7.31kw	Piston semi-hermetic
Condenser	Diameter	350mm	FNH
	Air flow	2350*2m3/h	Blue fin
Dimension	L*W*H	960*680*510MM	Plywood box package
Other parts	Axial fan with external rotor		Liquid receiver
	HP/LP controller	HP/LP gauge	Dry filter
	Solenoid valve	Sight glass	Check valve

Keep Improving, Making Better Life



Ice Machine Series

Flake Ice Machine



Flake ice machine can be customized

Introduction:

The flake ice machine has obvious advantages compared with the traditional type of briquettes (bulk ice) and snow flakes. It has the advantages of being dry, not easy to agglomerate, good fluidity, good hygienicity, large contact area with fresh-keeping products, and not easy to damage fresh-keeping products. In many industries, it is the preferred product to replace other types of ice.

Flake Ice Machine Technical Parameters

Model	2T	3T	5T	8T	15T
Ice production	2000kg/24 hours	3000kg/24 hours	5000kg/24 hours	8000kg/24 hours	15000kg/24 hours
Cooling capacity	11.6kw	17.2kw	35kw	57.1 kw	100.3kw
Total installed power	8.34kw	11.11kw	22.55kw	35.61 kw	52.62kw
Compressor power	7.2kw	9.97kw	20.7kw	26.6kw	44.5kw
Reducer power		0.37kw		0.75kw	
Ice machine size (mm)	1500*1100*1045	1640*1200*1250	2000*1650*1360	2200*1600*1870	2200*2000*2410
Weight (kg)	500kg	600kg	960kg	2600 kg	3480kg

Tube Ice Machine



Introduction:

Tube ice machine is named for the regular cylindrical hollow Tube shape of the ice it produces. The contact area is the smallest of the existing ice types in the market with the best melting resistance. It is suitable for drinks, decoration, food ice storage and so on, so it is mostly edible ice.



Tube Ice Machine Technical Parameters :

Model	TIM-10T	TIM-15T	TIM-20T
Ice Output	10t/24hrs	15t/24hrs	20t/24hrs
Ice Tube Diameter	φ29	φ29	φ29
Cooling Capacity	82.2kw	122.9kw	140.9kw
Input Power	40.35kw	56.6kw	71.8kw
Compressor Input Power	32.6kw	45.9kw	59.9kw
Ice Cut Reducer Input Power	0.75kw	1.5kw	1.5kw
Water Pump Input	1.5kw	2.2kw	2.2kw
Ice Machine Weight	2750kg	4000kg	4800kg
Ice Machine Diameter(mm)	2600*1700*3200	2400*1800*2050	2500*1900*2200
Weight Of Cooling Tower	Φ1880*2120	Φ2100*2510	Φ2100*2510

Direct Refrigeration Block Ice Machine



Introduction:

The evaporator of the direct refrigeration block ice machine, is made of aluminum alloy, the refrigerant evaporates and exchanges heat directly in the evaporator to make ice without salt water, thus the machine has long life-span, never rust in the evaporator. The deicing is semi-automatically without any crane and manual harvest.

Block Ice Machine (Model:LRT-5T) Technical Parameters :

Ambient temperature: 0°C-45°C, water temperature: ≤30°C. ; Evaporation temperature: -15°C
 Condensing temperature: 40°C ; Refrigerant: R22, R404A, R507A ; Ice weight: 5KG-100KG
 Power supply: 3P/380V/50HZ, 3P/220V/60HZ, 3P/380V/60HZ, 3P/460V/60HZ Optional

Model	ICEN-11	ICEN-12	ICEN-13
Ice Making Capacity	5t/24hrs	10t/24hrs	15t/24hrs
Refrigerating Capacity	42.5kw	91.9kw	136.7kw
Compressor Power	19.9kw	41.8kw	67.5kw
Total Power	22.9kw	47.3kw	76.5kw
Freezing Time	9 hours/ each time, 2 times a day	9 hours/ each time, 2 times a day	9 hours/ each time, 2 times a day
Ice Mold Quantity	99pcs	198pcs	300pcs
Ice Weight / Piece	25kg	25kg	25kg
Ice Mold Size	290*140*800mm	290*140*800mm	290*140*800mm
Cooling Type	Water cooling	Water cooling	Water cooling
Machine Size	5500*2210*2200mm	9106*2290*2350mm	10288*2776*2350mm

Brine Block Ice Machine



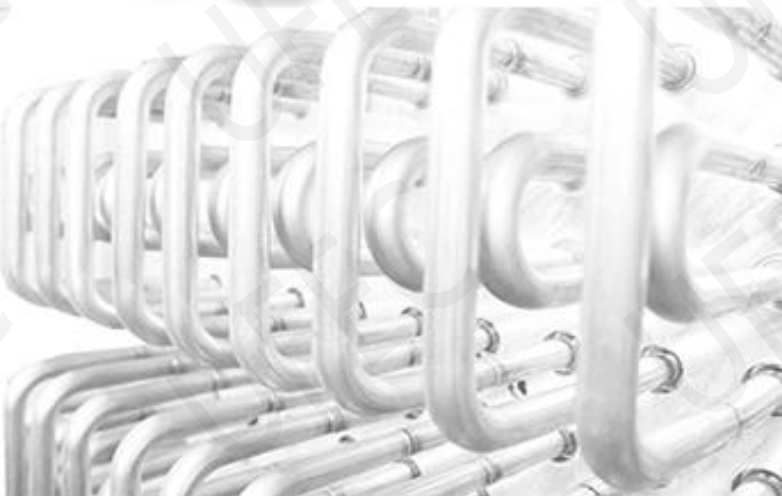
Ice cube specifications	Ice cube size (L*W*H, mm)	Ice cube time (kg/h)
5kg	500*165*80	4.8
10kg	610*205*100	6
15kg	610*265*120	8
20kg	750*320*120	8
25kg	750*315*145	12
30kg	950*300*145	12
50kg	1000*380*180	16
100kg	1200*550*210	24

Introduction:

Different brine block ice machine with the daily productive capacity range of 5,000kg/day to 50,000kg/day can be customized according to your requirements.



Keep Improving, Making Better Life



**Other
Refrigeration
Equipment
And
Accessories**

Industrial Water Chiller Package Unit



Introduction:

Industrial water chiller package unit is mainly applied in plastic & rubber industry, it can accurately control the molding temperature and shorten the molding circle, increase the product quality and improve the production efficiency. They are widely used in Metal working, Mechanical & Engineering, Chemical & Pharmaceutical, Food & Beverage, Laser, Electronics industry, Textile, Electroplate, Semi-conductor testing, Water jet, Vacuum coating, Construction and Military.

Industrial Chiller Machine Technical Parameters :

Model	FL-0250	FL-0500	FL-1000	FL-2000	FL-2600	FL-3500	
Temp Range	5~35 °C (optional: H series:5~50°C)						
Cooling Capacity (KW)	20°C	2.5KW	5KW	10KW	20KW	26KW	35KW
	10°C	1.8KW	3.6KW	7.2KW	14.5KW	18.5KW	25.5KW
Heating Capacity (H series)	10°C	2.5KW	5KW	10KW	20KW	26KW	35KW
	20°C	2KW	4KW	8KW	16KW	20KW	28KW
	45°C	1KW	2KW	4KW	8KW	11KW	14KW
Flow And Pressure	25L/min 2bar	35L/min 2.5bar	50L/min 2.5bar	75L/min 2.5bar	110L/min 2.5bar	200L/min 2.5bar	
Interface Size	G0.5	G0.75	G0.75	G1	G1.25	DN40	
Liquid Storage Volume	15L	25L	40L	70L	100L	200L	
Refrigerant	R-407C						
Dimension (cm)	45*65*120	50*85*130	55*100*175	70*100*175	80*120*185	95*170*205	
Power Max 50HZ	AC220V 1.5KW	AC220V 2.2KW	AC380V 4KW	AC380V 6KW	AC380V 8KW	AC380V 12KW	
Weight (kg)	115	145	225	340	400	560	

Industrial Water Treatment Equipment

Water Softener Filter System



The automatic water softener is an ion-exchange water softener with automatic control during operation and regeneration. It uses sodium-type cation exchange resin to remove calcium and magnesium ions in the water and reduce the hardness of the raw water to achieve the purpose of softening hard water and avoid carbonate in the pipeline. Containers and boilers have fouling. It greatly saves investment costs while ensuring smooth production.

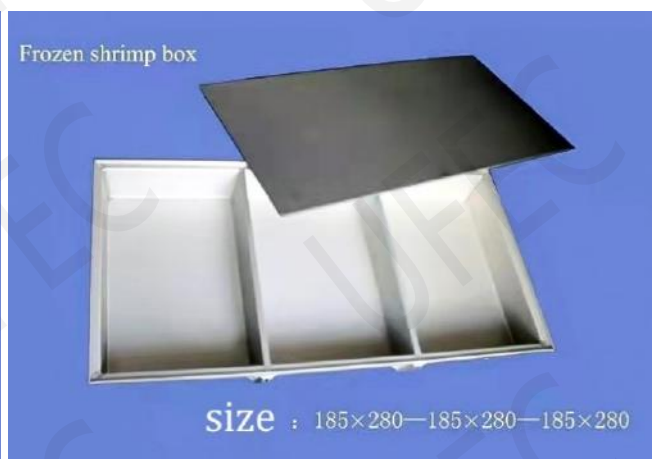
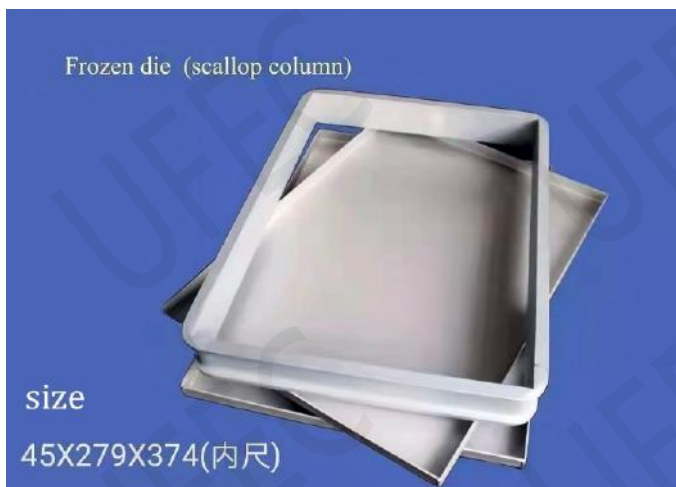
Yield	1-50T, Can Be Customized
Water source	Tap water/well water/river water/ground water
Water inlet pressure	0.2-0.4Mpa
Influent Turbidity	<5NTU
Residual chlorine in influent	<0.1PPM
Inlet water temperature	2-45°C
Iron content of influent	<0.3mg/L
System water consumption	<2%
Water hardness	<6mmol/L
Manganese content of influent	<0.1mg/L
Power consumption	24w

Fish Tray

The Fish Tray will be widely used in freezing process industry such as aquatic products, seafood, meat products, agricultural sideline products, and other quick-frozen food.

Advantage of Aluminum Frozen Tray

- Much faster heat transfer and easily demoulding, it is 20 minutes faster than the other freezing boxes so that will highly improve the efficiency. 2). Long service time
- No broken, avoid the repair costs of stainless steel tray or iron
- Fully rust proof
- Environmental protection by recycling



Refrigeration Equipment Accessories

Refrigeration Equipment Accessories



Axial Fan



Stainless Steel Hose



Ice Bucket



Card Board Box



Cooler Box

Small Motor



Pressure Gauge



Temperature Controller



Keep Improving, Making Better Life



Yantai Guangwei Food Cold-Chain Technology Co.,Ltd.

Tele: 0086-535-2101703

E-mail: info@ufectech.com

FAX: 0086-535-2101701